

PART OF S.E. 1/4 OF SEC. 21, T.7N., R.1E., S.L.B. & M.

60

PATIO SPRINGS UNIT NO. 1

LOTS 61 TO 68 & P

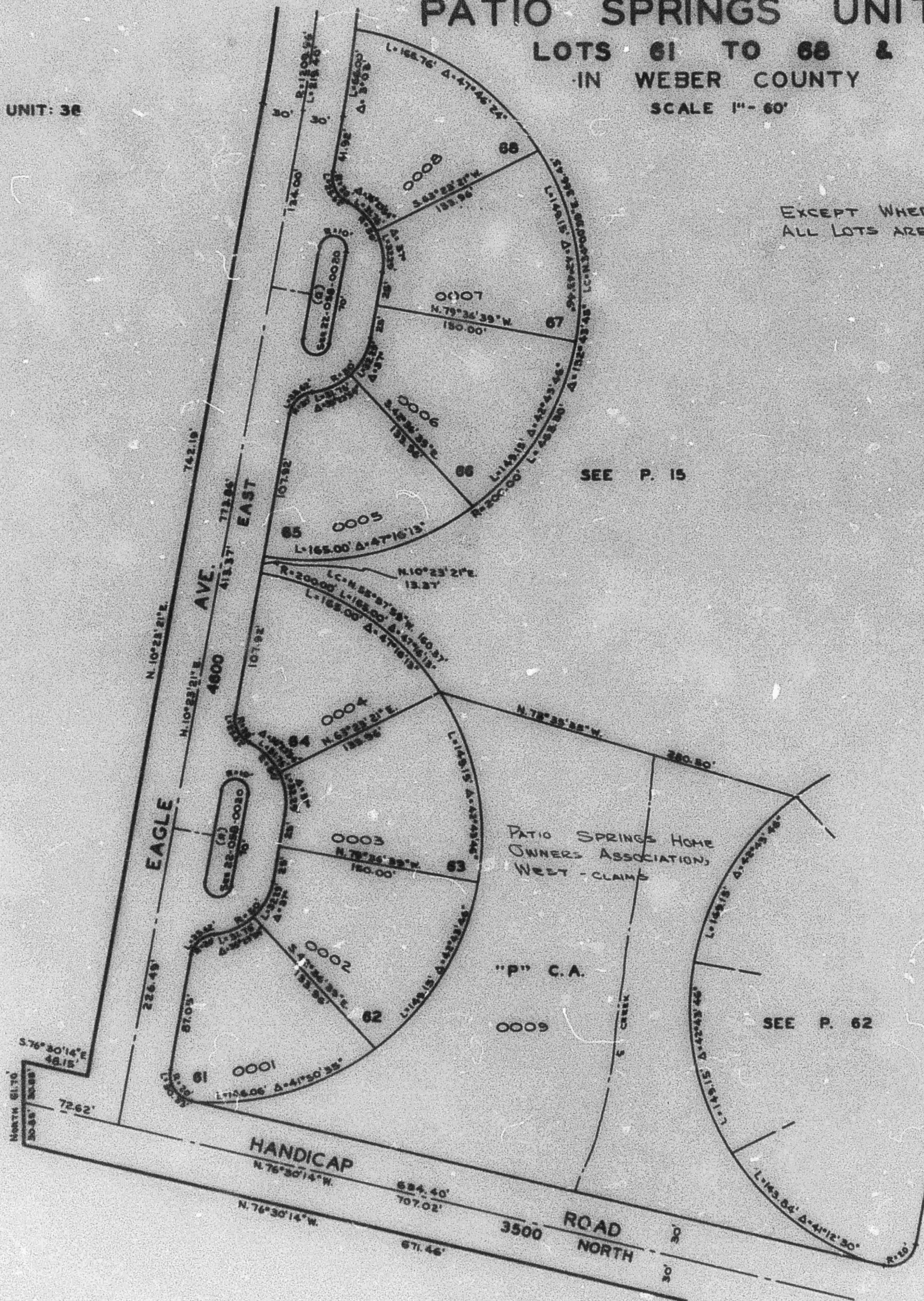
IN WEBER COUNTY

SCALE 1" = 60'

PREFIX: 22-060

TAXING UNIT: 3E

EXCEPT WHERE OTHERWISE SHOWN,
ALL LOTS ARE OWNED BY: COSEC & CO.



SEE P. 15

SEE P. 62